

The Characteristics of Historic Urban Quarters in Ternate, Indonesia Based on Analysis of Urban Space and Architectural Heritage

Maulana IBRAHIM*
KANAZAWA Shigemori**

Abstract

This paper aims to reveal the characteristics of Ternate city's historic quarters that has started inhabited since the 17th century both architecturally and its built environment. Ternate city is located in the active volcano island, with an area of 111 Km² leaving the historical quarter in the city center, which was originally formed as a result of trade and political relations between the Sultanate of Ternate and the *Vereenigde Oostindische Compagnie* (VOC). The VOC monopoly that divided the capital city of Ternate into quarters based on religion and ethnicity politics shaped the early pattern of Ternate today. The city center area consists of the Sultanate quarter, Makassar quarter, Chinese quarter, and Fort *Oranje* as the center of VOC rule in the early 17th century (1607-1613) before it moved to Batavia. Nowadays, the massive development of Ternate city in the historic center is increasingly changing its historical cityscape, but still leave distinctive residential blocks with straight paths that run north to south, connecting the Sultan Palace to Fort *Oranje*, with some noblemen houses, traditional wooden houses and the houses of merchant and religious leaders.

Keywords: *Ternate, Indonesia, Urban Heritage, Historic Urban Quarter, City Character*

1. Introduction

1.1. Research Background

As one of the main ports of the spice trades in the 16th C ¹⁾ Ternate rose and

* Doctoral student at Graduate School of Human Environment

** Professor at Faculty of Human Environment

developed from a small village in to a port city. Spice Trade became the main commodity in that period, attracting many traders from Nusantara such as Javanese, Makasaresse, Malay, and traders from as far away as China, Arabia, and Europe.

Ternate city is located in the active volcano island with the same name, Ternate (Fig.1), with an area of 76 Km² leaving the historical quarter in the city center which was originally formed as a result of trade and political relations between the Sultanate of Ternate and the *Vereenigde Oostindische Compagnie* (VOC). The VOC monopoly that divided the capital city of Ternate into quarters based on religion and ethnicity politics shaped the early pattern of Ternate today. The city center area consists of the Sultanate quarter, Makassar quarter, Chinese quarter, European Quarter and Fort *Oranje* as the center of VOC rule in the early 17th century (1607–1613) before it moved to Batavia. Nowadays, these areas still leave distinctive residential blocks with straight paths that run north to south, connecting the Sultan Palace to Fort *Oranje*, with some noblemen houses, traditional wooden houses and the houses of merchant and religious leaders.

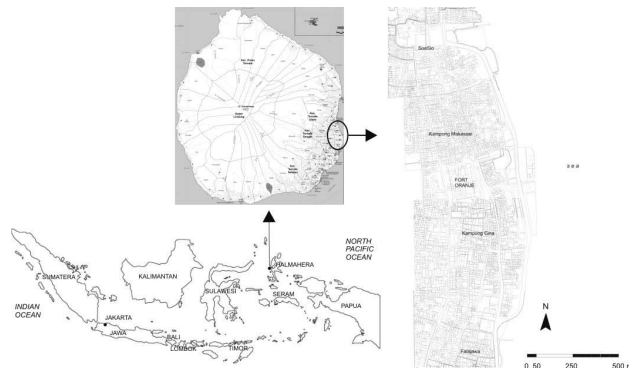


Fig.1: Location of Ternate City
(Source: Adopted from Google Earth by Author, 2013)

1.2. Research Objectives

This research aims to reveal the characteristics of Historic Urban Quarter in Ternate, based on its Urban Space and Architectural Heritage, shaped the historic quarter that these days is growing fast by modern development, losing its

authenticity.

1.3. Research Methods

This research based on historical document analysis is comparative with the existing condition. Historical map, photos, and documents that have been used in this research refer from Dutch Colonial maps and Indonesia National Archive²⁾ to connecting data from historical documents and existing conditions, a multiple field survey has been conducted and extensive interviews with some key persons in 2012 and 2013. This research using the historical interpretative method, the study area was chosen for their historical aspects as an embryo for the City development. Information from key representatives of the community of each historic quarter, historian, and Sultan of Ternate make the data stronger and express the aspects of its urban space and architectural heritage of each quarter.

2. A Brief History of Ternate City

Since the kingdom of Ternate was established in 1257³⁾ and converted to a Sultanate in 1536-1539⁴⁾, Ternate developed and was regarded as the main port city in the Moluccas. Based on its clove trade as one of the main Spices since the 16th C the name Spice Islands⁵⁾ also girded to this Island and its neighbor islands by the Portuguese. The first capital of the Sultanate was located in *Sampalu*,⁶⁾ an area in the south-west part of the island. After the colonization period between the 1500s and 1600s, by The Portuguese, the capital city was taken back by the Sultanate but fell to the Spanish in 1606.⁷⁾ The Sultanate moved its capital to the east part of the Island with the compromise with the Dutch VOC. (Fig.2)

This new capital, until recently became Ternate inner city or the centre of an activity, which consists of some historic quarters and blocks as the result of colonization and politics of the Dutch VOC in the early 17th C.⁸⁾ These are the *Soa Sio* (the capital of Sultanate) *Kampung Makassar* (Nusantara's merchants settlement) Fort *Oranje* (Dutch VOC headquarter) *Kampung Cina* (Chinese merchants settlement), *kampung tenga* (Arabic merchants settlement), *kampung Sarani* (local Christian, and The European Quarter), and *Falajawa*, a settlement of traders, which developed from the early period of 17th C until the 20th C. (Fig.3)

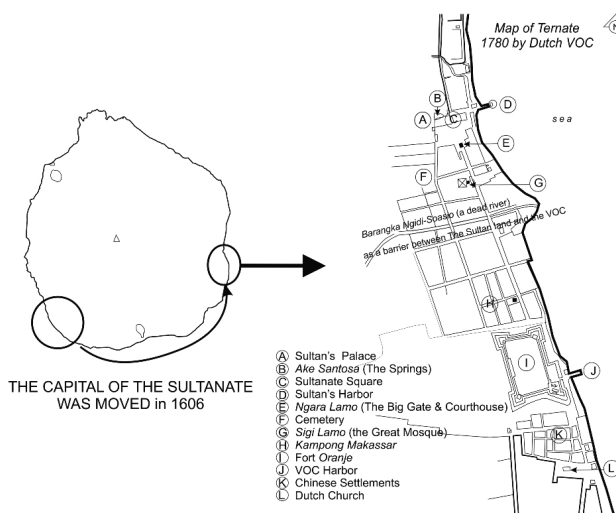


Fig.2: The moving of Ternate City Center in early 17th C. Center (Source: Data Analyze, 2014. 1780 map from Roever and Brommer, 2008²⁾)

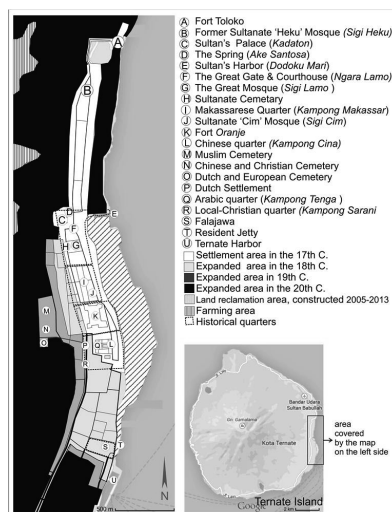


Fig.3: Development of Ternate City (Source: Data Analyze, 2015)

3. The Historic Quarter of Ternate City

Ternate inner city, as the study area consists of the historical and cultural elements, rather than the tangible and intangible. The elements like architecture, open space, street, port, and cultural activities that happen in the inner city have been classified as follows.

3.1. Urban Space of Ternate Historic Quarter

The city center was spread between and surrounded by Fort *Oranje* in the south and the Sultan Palace in the North. Settlements were located based on culture and/or religion. In the north, it consisted of The local peoples settlement, the Sultanate capital *Soa Sio*; the Nusantara's merchants of *Kampong Makasar*, the European settlement and Fort *Oranje*, Chinese in *Kampong Cina*, Arabic in *kampong Tenga* and *Falajawa* and local Christian community in *kampong Sarani*.

Nowadays, the inner city of Ternate has mixed inhabitants but the old quarter still retains its named neighborhoods and some of its traditional houses. The urban development of Ternate city center became more uncontrolled especially in

the former capital of the Sultanate and Colonial that became today's city center.

3.1.1. *Soa Sio*

Soa Sio is the main neighborhood or Kampong in Ternate, were the nine *Soa* (*Soa Sio*) located, as the capital of the Sultanate. This quarter located on the west part of Ternate island that consists of natural, architectural and urban elements as well as cultural landscape Such as The Sultan Palace (*Kadaton*), open space (*Sunye Lamo* and *Sunye ici*), springs (*Ake Santosa*), Sultan's Jetty (*Dodoku Mari*) The Big Gate (*Ngara Lamo*), The Great Masjid or The Sultan Masjid (*Sigi Lamo*), and the cemetery (Fig.5). This symbolizes a maritime kingdom that depends on the sea. *Soa Sio* also consists of the settlements of Noblemen and the Sultanates servants (Fig.4). On the early period of The Sultanate, this quarter located in the south-west part of the Island, the early capital of Ternate Sultanate, which was well known as *Sampalu*⁹⁾ from 13th to 16th C. and *Gam Lamo* in the period of 1500s–1606 before fell to the Spanish.

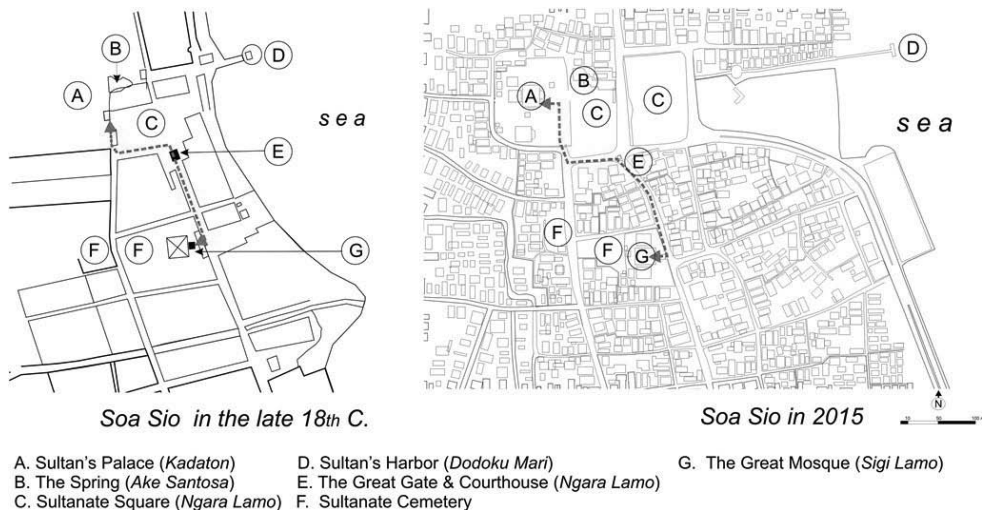


Fig.4: *Soa Sio*, the capital of the Sultanate of Ternate
(Source: Adopted from Dutch Colonial Map and Google Earth by Author)

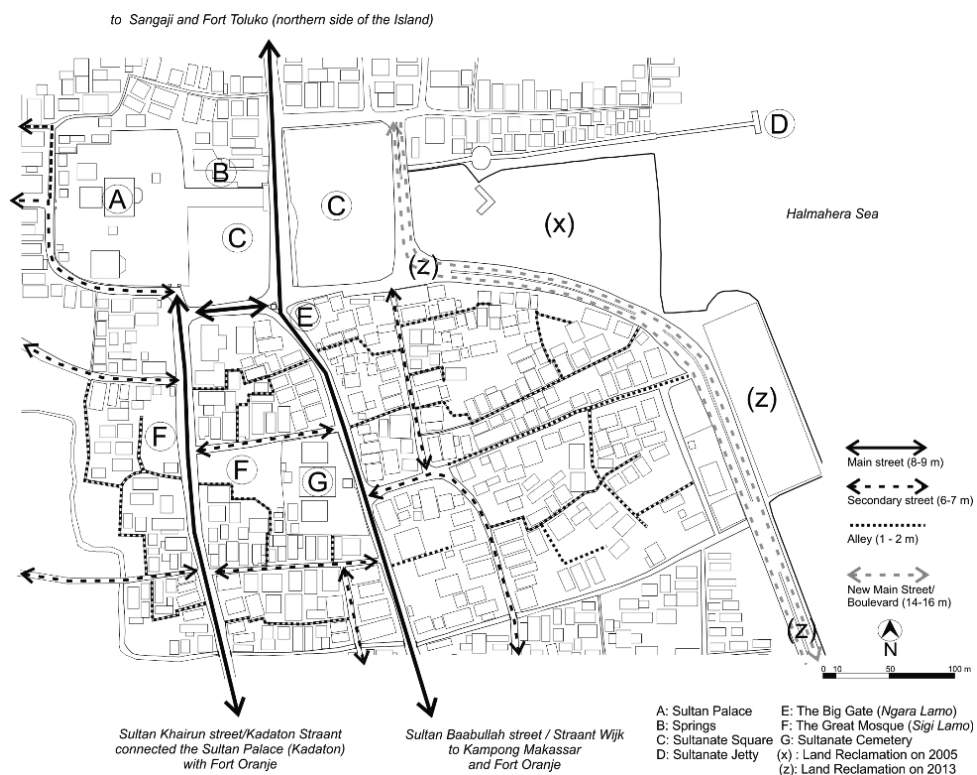


Fig.5: Street pattern and linkage of Soa Sio (Source: Data Analysis, 2015)

3.1.2. Makassar's Quarter (*Kampong Makassar*)

Was first inhabited mainly by the traders from Malay, Java and Sulawesi Island, since 17th C¹⁰) Nowadays, the inhabitants are mixed with local people along with an increasing of population. This quarter administratively consists of *Kelurahan Makassar Barat* (West Makassar sub-district) and *Kelurahan Makassar Timur* (East Makassar sub-district). The study area was many architectural heritages locations in the East Makassar sub-district that in the past was close to the beach.

Makassar's quarter that located between *Soa Sio* and fort *Oranje* was passed by two main streets, which connected the Sultan's Palace and Fort *Oranje*. A secondary street divided this area into small blocks. The noblemen houses and local traditional houses are dotted around the side of the main street (Fig.6).

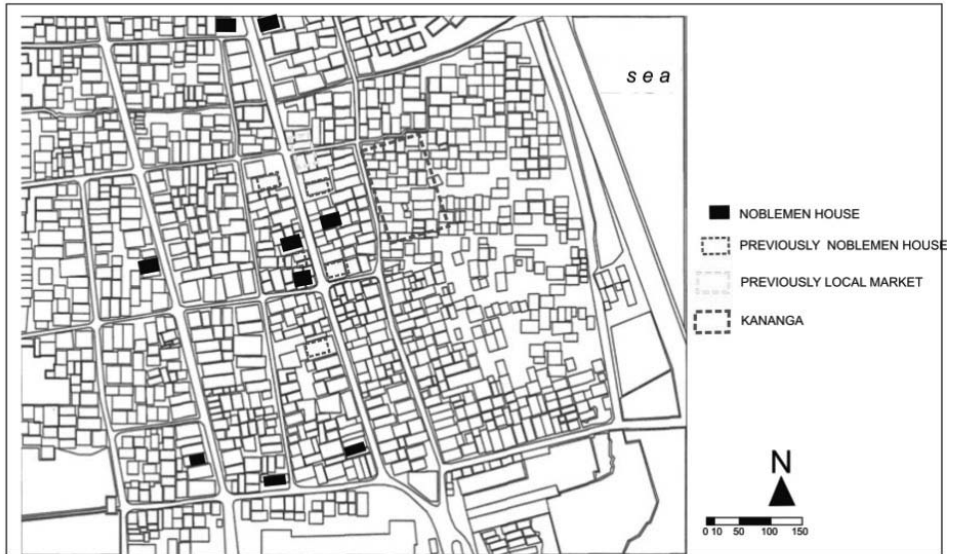


Fig.6: The Noblemen houses on Soa Sio and Makassar's Quarter
(Source: Field Research, 2013)

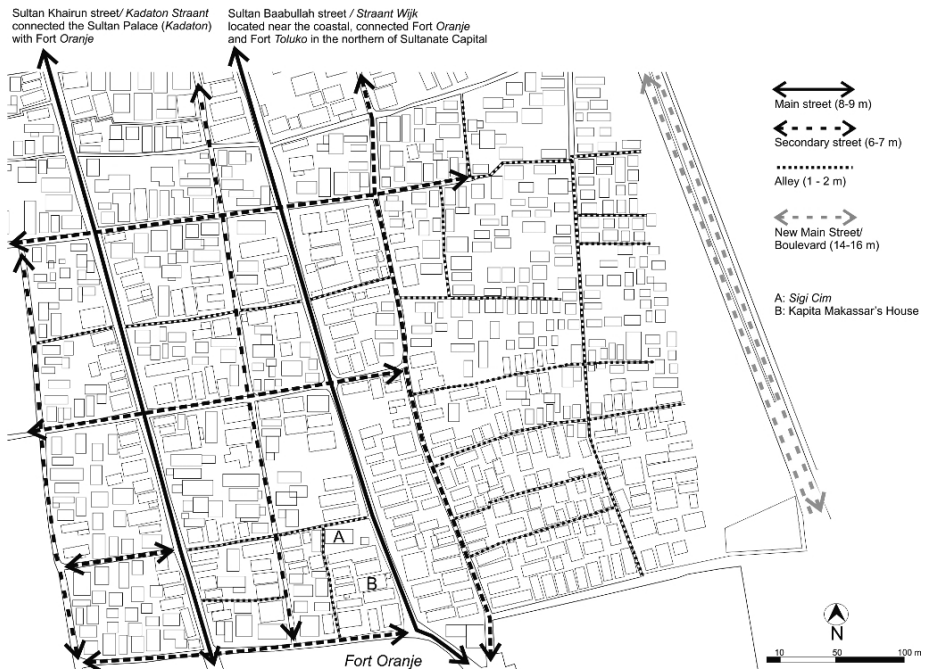


Fig.7: Street pattern and linkage of Makassar's quarter
(Source: Data Analysis, 2015)

This quarter was settled up on the Dutch VOC Colonial period were in former times, the Makasaresse and other citizens would extended their houses and Garden as far as the mountain and beyond, therefore, after the revolt of King Amsterdam (Sultan Muhammad Nurul Islam, role in 1675-1691) in 1680, Governor-General Padbrugge not allowed they come back to the gardens area and settled they land to be cultivated beyond fort *Oranje*, with developed area and roads.¹¹⁾

3.1.3. Fort *Oranje*

Since it was built by Cornelis Matlief de Jonge in 1607, Fort *Oranje* was the first headquarters of the Dutch VOC in East India, before moving to Batavia (now Jakarta) in 1613¹²⁾. After the Dutch VOC collapse in 1799, the Dutch Government and British alternately controlled this fort, and while the disturbance to peace and order of capital had ceased, the former Governor-General houses that replaced by The Residents in the British period, moved outside the fort¹³⁾. From the period of 19th C until early 20th C. the Ternate Residency capital located between *Soa Sio* in the North and *Barangka Toboko*¹¹⁾ in the south (Fig.8).

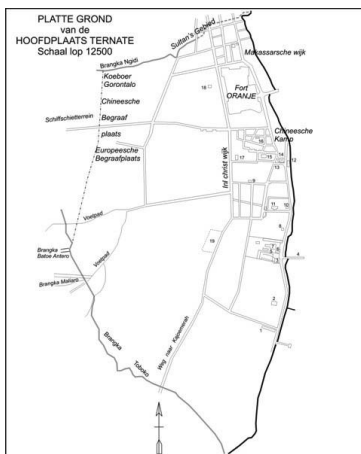


Fig.8: Ternate Capital City circa 1890
(Source: Adopted from De Clercq, F.S.A. 1890)¹⁴⁾

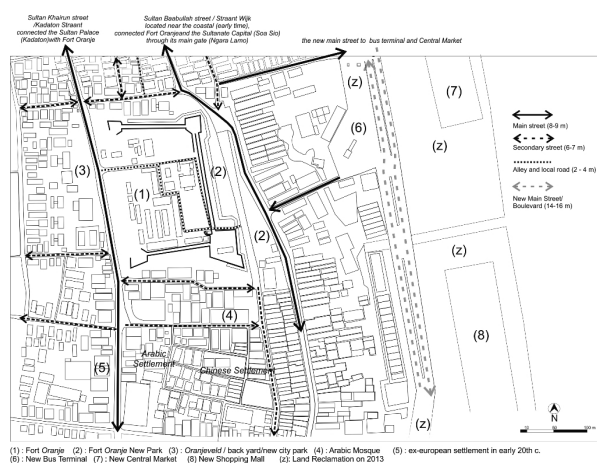


Fig.9: Street pattern and linkage of Fort *Oranje*
(Source: Data Analysis, 2014)

Nowadays, the fort *Oranje* administratively located in *Kelurahan Gamalama* as a city center and the European quarter part of *Kelurahan Santiong*. Fort *Oranje* surrounded by a canal and an open space that can be seen today. The massive development of the city center totally changed the original character of these quarter's colonial heritage, beside the fortress. (Fig.9)

3.1.4. Chinese Quarter

Since the 16th C The Chinese merchants has come and doing trading with Ternatans; furthermore, based on the 1599 Dutch traders report, the Chinese also have a good position as a *Syahbandar of Ternate* or The Chief of Ternate Port, and they also has a good relationship with the Sultan, while some of them convert to Islam, they have they own community leader in 1629, which called *Sowohi Cina*, or the Chinese settlement leader¹⁵⁾.

The Chinese quarter start to set-up in the Dutch VOC period, when the VOC controlled all the traders, in the beginning of 17th C. This quarter formed as a settlement for Chinese merchants from the first period of the city until now. Divided into small blocks by alleys that shape the character of the area, its heritage shops houses and a shrine remain but have been renewed. Nowadays, this quarter has become one of the centers for commercial and business activity that has been massive developed. This threatens the characteristics of the Chinese quarter. (Fig.10)

3.1.5. Arabic Settlement

There are no reports or document about the early Arabic settlement in Ternate, only founded in 19th C that they come as traders and as religion teacher¹⁶⁾. The Arabic settlement in Ternate reported approximately one hundred people of Arabic descendants and twelve real Arabs in the end of 1885¹⁷⁾. The Arabs also comes as an *Ulama* or Islamic teacher²⁾ to strengthen Islam in Ternate and area surrounding it, as *Syaid Muksin Albar bin Muhammad Albar* became the Islamic teacher of Sultan Usman and in 1905, he have a position as one of the Islamic leader or *Imam (Imam Jiko)* in The

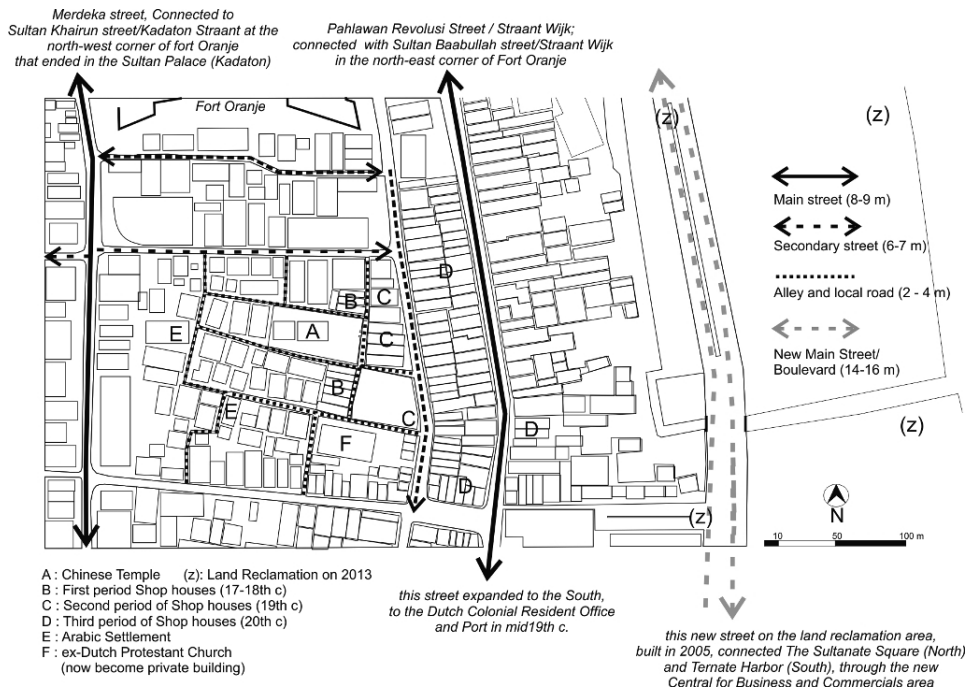


Fig.10: Street pattern and linkage of Arabic Settlement and Chinese quarter
 (Source: Data Analysis, 2014)

Sultanate of Ternate¹⁸⁾.

The Arabic settlement of *Kampong Arab* is also known as '*Kampong Tenga*' (*Kampong* in the middle) because of its location between the Chinese quarter and the European quarter. A small number of architectural heritage can be found in this area, because many houses have already changed its shape into a contemporary one.

3.1.6. *Falajawa* Quarter

Falajawa quarter is very close to the Ternate Harbor, making it a merchant's settlement. It is not mentioned exactly in the city history about the establishment of this quarter.

On the Dutch archive only mention that *Falajawa* is the compound area of *Kadaton Tidore* or The Sultan of Tidore's house in Ternate, and the name of *Falajawa* derived from the former building style of having a guard house above

the entrance gate¹⁹⁾. Therefore, the word *Falajawa* can be said to be derived from Ternatans language of *Fala* or House and *Jaga* or Guard.

Based on the interviews with local residents, the main entrance of *Falajawa* area located in east part or close to the beach road, ones have a big gate with a roof and a guard, and they believe that they ancestors come from India and Arabian Peninsula with some of them already married with *Nusantara* residents before coming to Ternate^{*3)}. Many traditional house (*Fala Kanci*) and the inhabitants have relationships each other's as a family^{*4)}, all the houses connected with small street, with the rapid development of buildings. (Fig.11)

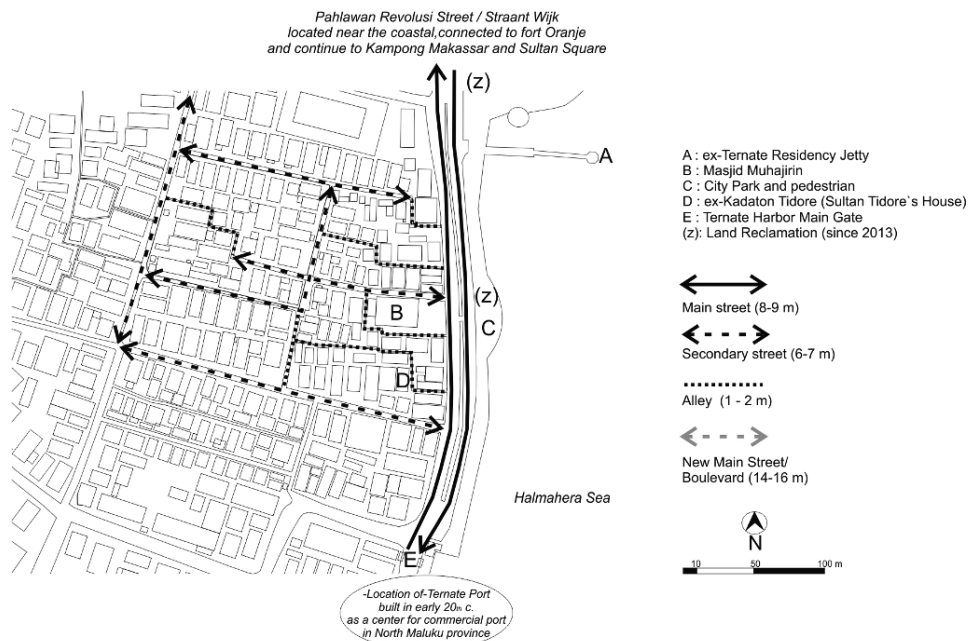
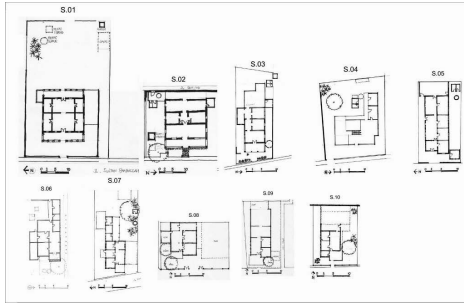


Fig.11: Street pattern and linkage of *Falajawa* quarter
(Source: Data Analysis, 2014)

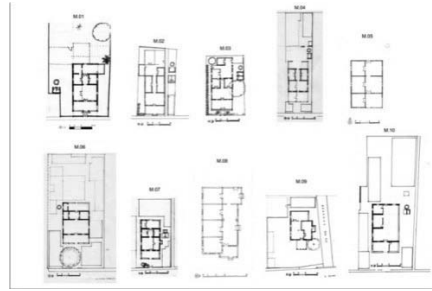
3.2. Architecture Heritage

Based on the field survey, the Architecture heritage that still exist in Ternate's Historic Urban Quarter consists of Traditional wooden houses or *Fala Kanci*^{*5)}, Noblemen houses^{*6)}, and shop houses, which are spread across each historic quarter with its variety dimensions (Fig.12&13). Each of the houses has its own

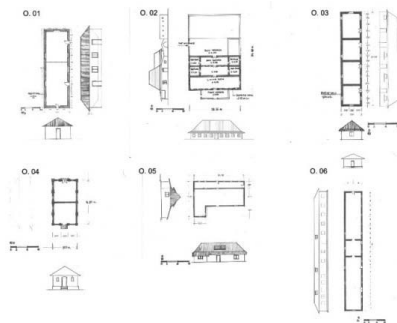
type (Fig.14). *Fala Kanci* and Noblemen houses are located in all quarter, except in Fort *Oranje*, and mostly at *Soa Sio* and *Kampong Makassar*, while shop houses only located in the Chinese quarter.



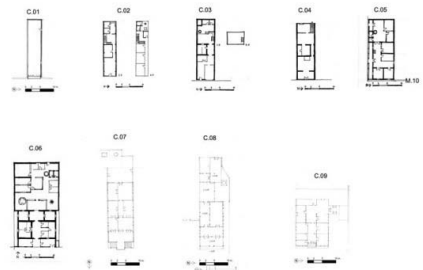
Architecture Heritage in *Soa Sio* quarter



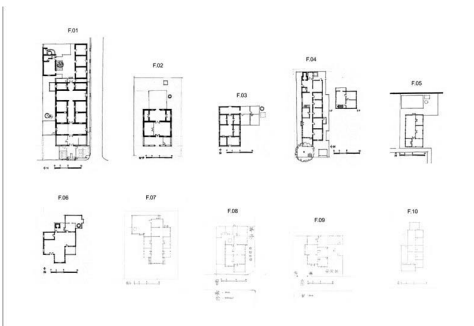
Architecture Heritage in *Kampong Makassar*



Architecture Heritage in Fort *Oranje*



Architecture Heritage in Chinese Quarter



Architecture Heritage in *Falajawa* quarter

Fig.12: Architecture Heritage of each Historical quarter (Source: Field Surveys, 2014)

The *Fala kanci* and Nobleman houses express a philosophy and meaning according to room layout, size and shape, expressed the social condition of the owners²⁰⁾ and also based on the philosophy of *Jou Se Ngofa Ngare* that express symbol of connection between human and God as the creator⁷⁾.

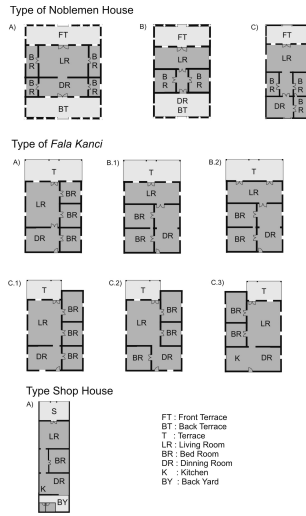


Fig.13: Architecture Heritage typology
(Source: Data Analysis, 2014)

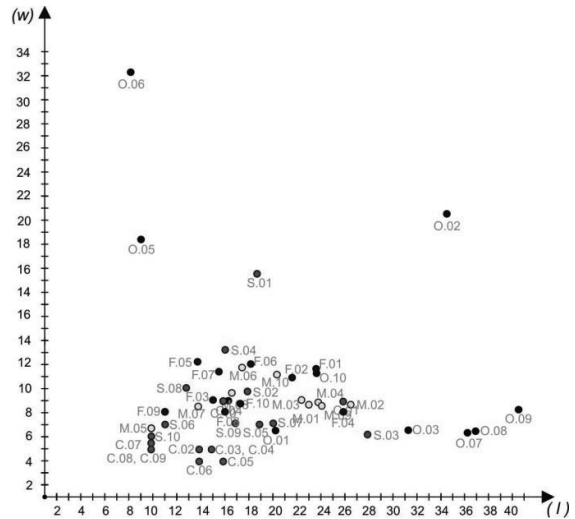


Fig.14: Architecture Heritage Building's dimensions of all quarters
(Source: Data Analysis, 2014)

From figure 12 above, we can describe the Heritage Buildings on each quarter into a building typology (Fig.13). Dimensions of each architecture heritage in all area spread between 50m²-320m², which has mostly around 120m²-144m² (Fig.14). The houses in *Falajawa* have many similar dimensions while in *Fort Oranje* has the biggest range of dimensions. This is happened because the difference function of each quarter that gives a big influence to the house dimensions. The Arabic houses look pretty similar to the house in Makassar's quarter, but they are built with richer interiors and varied building material (doors, windows, ornaments, floors, and roofs type). These houses have many influences from Malay on the roof type, and European styles such as the floor material.

4. Conclusion

The historic quarter that exist in Ternate city center give a unique authenticity as an Urban Heritage based on its unique physical characteristic, cultural, and historical background that has been analyzed by its Urban space and Architecture heritage. Furthermore, these quarters are still struggling with the rapid development of buildings and urban space (Table 2).

The characteristics of this historic quarter can be manage by preserving the tangible and intangible heritage, which is the value of maintain the inherited building and its environment, the sustainability of cultural activity, and the authenticity of the architecture heritage and its urban space. With regulations from the local government that preserves the whole natural and built environment, not only a single building; and the collaboration between the private and public sector can help to manage this historic urban quarter, for the perspective future of Ternate city.

Table 2: Urban Heritage Characteristic of Ternate City Center

Study Area	Characteristic of:		Conclusion
	Urban Space Heritage	Architecture Heritage	
<i>Soa Sio</i>	Space order based on indigenous Cosmology, the concept of " <i>Toma Ua Hang Moju</i> " and " <i>Jou se Ngofa Ngare</i> " showing with its 7 urban elements.	Each buildings have its own characteristic: 1) Traditional (<i>Fala Kanci</i>) 2) Adaptation (Noblemen Houses)	Eroded its character as a historical urban landscape
Makassar's quarter	Urban form based on order, the main street and alleys with grid system, settlements ordered by block.	Traditional houses (<i>Fala kanci</i>) with local materials and Noblemen house with sufficient courtyard.	Mixed used and functions decreasing its originally character
Fort <i>Oranje</i>	Originally a military system, a square wall surrounding for defense and an open space surrounding it, makes a strong character as a colony. Nowadays, Decreasing in originally space character as a fort.	Dutch Colonial buildings, and the contemporary architecture surrounded by (commercial area)	Began to be threatened as a historic district, need a totally conservation plans.
Chinese quarter	Urban form based on order, the grid system with a temple in the middle with a small open space. Plots that extends to the rear. Nowadays, struggling with commercial area development.	A typology Chinese shop house, changed in the façade (front side)	Mixed used and functions decreasing its originally character
<i>Falajawa</i>	Pathway connecting each house with 'inner' orientation.	Traditional wooden houses (<i>Fala Kanci</i>) with local materials and a noblemen house. Some old building has change by its materials.	A traditional character still in moderate needs improvements in conservation and urban development.

Acknowledgements

This study was supported by the Directorate General Higher Education, Ministry of Research, Technology, and Higher Education, Republic of Indonesia, and Graduate School of Human Environment, Osaka Sangyo University, Japan.

Notes

- *1) *Barangka* or *brangka* is the Molucan word for a dry brook, while *Toboko* is the name of a village in the south part of fort *Oranje*.
- *2) Interview with H. Faisal Bin Syech Abubakar, The recent Arabic community leader or *Kapita Arab*, February, 27, 2014.
- *3) Interview with H. Ali, one of the oldest man in *Falajawa*, October, 2012.
- *4) Field survey in October 2012 found the fact that the *Fala Kanci* or traditional house still remains and the owners of each house have groups of family relationship.
- *5) *Fala Kanci* is derived from the Ternatan word *Fala*, which mean House, and *Kanci* means skeleton wooden structure. This wooden house spread in many area of Ternate.
- *6) Noblemen houses in Ternate consist of the Sultan's Family, high-ranking Sultanate official, and a high rank merchants heritage house. Based on field survey in 2012, 2013, and 2014, these houses found in *Soa Sio*, *Kampung Makasar*, *Kampung Tenga*/Arabs settlement and *Falajawa*.
- *7) *Jou Se Ngofa Ngare* is a basic philosophy of Ternatans, it means The relation between God and Human, based on Interview with the 48th Sultan Ternate, H. Mudaffar Sjah, and former *Imam* and *Jo Kalem* (Islamic leader of The Sultanate), Bpk. H. Ridwan Dero, December 2013.

References

- 1) Andaya, Leonard Y. 1993. The World of Maluku: eastern Indonesia in the early modern period. University of Hawaii Press. p.58
- 2) Roever, Arend de and Brommer, Bea (editor) (2008). *Grote Atlas van de Verenigde Oost Indische Compagnie* Comprehensive Atlas of the Dutch United East India Company III, The Hague.

- 3) Valentijn, Oud en nieuw, vol.1 pp.282-283 in Fraassen, C.H. 1987. *Ternate, De Molukken en De Indonesische Archipel, Van Soa Organisatie en Vierdeling: Een Studie van Traditionele Samenleving en Cultuur en Indonesia, Deel II*. Unpublished Dissertation, Leiden University, p.2
- 4) Jacobs, A Treatise, p.85, in Andaya, Leonard Y. 1993. *The World of Maluku: eastern Indonesia in the early modern period*. University of Hawaii Press. p.57
- 5) Burnet, Ian, 211. *Spice Islands*. Rosenbergpub. Australia. p.14
- 6) Valentijn, 1724. *Oud en nieuw*, vol.1 pp.282-283 in Fraassen, C.H. 1987. *Ternate, De Molukken en De Indonesische Archipel, Van Soa Organisatie en Vierdeling: Een Studie van Traditionele Samenleving en Cultuur en Indonesia, Deel II*. Unpublished Dissertation, Leiden University, p.2
- 7) Andaya, Leonard Y. 1993. *The World of Maluku: eastern Indonesia in the early modern period*. University of Hawaii Press. p.140
- 8) *Ibid*, p.153
- 9) Droste, B. v., H. Plachter, et al. (1995). *Cultural Landscape of Universal Value*, New York, Gustav Fischer, p.15
- 10) Leirissa, R, 2000. *The Bugis-Makassarese in the port towns; Ambon and Ternate through the nineteenth century*, in: *Bijdragen tot de Taal-, Land-en Volkenkunde*, Authority and enterprise among the peoples of South Sulawesi 156, No.3, Leiden, pp.619-633
- 11) Valentijn, 1724. *Oud en nieuw*, vol.1b p.13 in De Clercq, F.S.A. 1890. *Ternate, The Residency and Its Sultanate (Bijdragen tot de kennis der Residentie Ternate, 1890)*. Translated from the Dutch by Paul Michael Taylor and Marie N. Richards. Smithsonian Institution Libraries Digital Edition, 1999. Washington D.C. p.11
- 12) Wall, V.I. Van De, 1928. *De Nederlandsche Oudheden in de Moluken*. S-Gravenhage Martinus Nijhoff. p.230
- 13) De Clercq, F.S.A. 1890. *Ternate, The Residency and Its Sultanate (Bijdragen tot de kennis der Residentie Ternate, 1890)*. Translated from the Dutch by Paul Michael Taylor and Marie N. Richards. Smithsonian Institution Libraries Digital Edition, 1999. Washington D.C. p. 7
- 14) *Ibid*
- 15) Fraassen, C.H. 1987. *Ternate, De Molukken en De Indonesische Archipel, Van Soa*

Organisatie en Vierdeling: Een Studie van Traditionele Samenleving en Cultuur en Indonesia, Deel I. Unpublished Dissertation, Leiden University. p.73

- 16) *Ibid.* pp.78–79
- 17) De Clercq, F.S.A. 1890. Ternate, The Residency and Its Sultanate (*Bijdragen tot de kennis der Residentie Ternate*, 1890). Translated from the Dutch by Paul Michael Taylor and Marie N. Richards. Smithsonian Institution Libraries Digital Edition, 1999. Washington D.C. p.23
- 18) Fraassen, C.H. 1987. *Ternate, De Molukken en De Indonesische Archipel, Van Soa Organisatie en Vierdeling: Een Studie van Traditionele Samenleving en Cultuur en Indonesia, Deel I.* Unpublished Dissertation, Leiden University. p.78
- 19) De Clercq, F.S.A. 1890. Ternate, The Residency and Its Sultanate (*Bijdragen tot de kennis der Residentie Ternate*, 1890). Translated from the Dutch by Paul Michael Taylor and Marie N. Richards. Smithsonian Institution Libraries Digital Edition, 1999. Washington D.C.
- 20) Rahim, Mustamin and Ibrahim, Maulana. 2009. Typology of North Maluku Traditional Architecture. Proceeding on The International Seminar on Environment and Architecture, Samratulangi University, Manado, Indonesia.